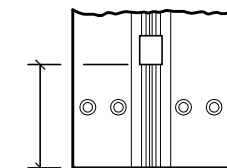


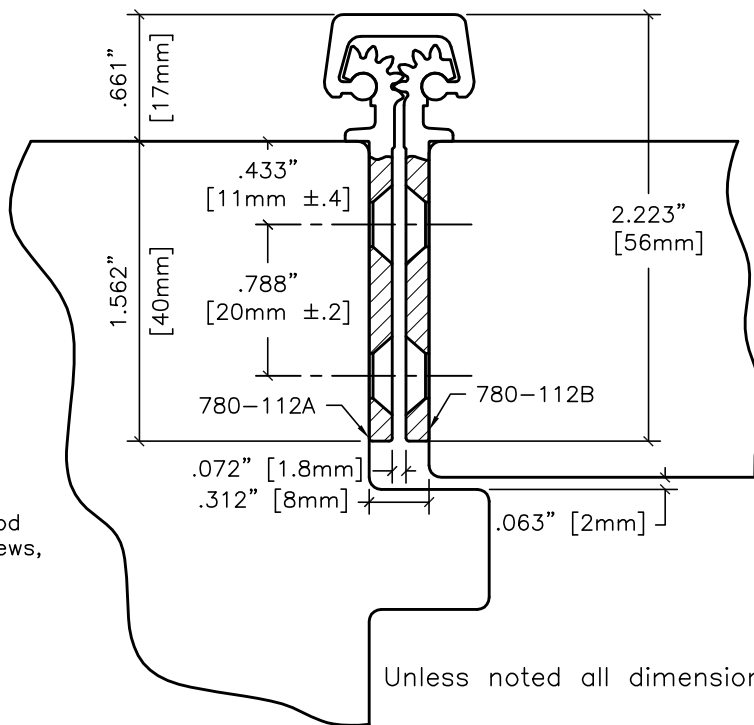
#12 x 82" F.H. countersunk wood or machine screws, (38 places).

16 bearings spaced equally @ 5.125" center to center.

2.684" [68.2mm] Ref.



End of hinge to first bearing, both ends.



Unless noted all dimensions  $\frac{\pm.020''}{\pm.5mm}$

### Vertical Hole Spacing

Non cumulative tolerances on hole to hole spacing.

|   | Metric (mm)                              | Decimal (in.)                              |
|---|--|--|
| A | 2108.0 <sup>+0.00</sup> <sub>-0.80</sub> | 82.992 <sup>+0.000</sup> <sub>-0.030</sub> |
| B | 40.0 ±.25                                | 1.575 ±.010                                |
| C | 85.0 ±.20                                | 3.346 ±.008                                |
| D | 130.0 ±.20                               | 5.118 ±.008                                |
| E | 200.0 ±.20                               | 7.874 ±.008                                |
| F | 257.0 ±.20                               | 10.118 ±.008                               |



HAGER COMPANIES  
HIGHWAY 78 WEST  
P.O. BOX 3368  
OXFORD, ALABAMA 36203

780-112 83" SD

DATE 10-25-96 REV. 01-15-02 DR. KBJ SCALE None

FILENAME z:\roton\template\standard\780-112.dwg

DRAWING NO. 780112083SD