

Unless noted all dimensions $\pm .020$ "
 $\pm .5$ mm

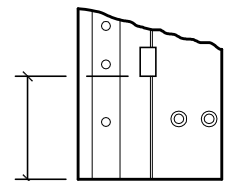
Vertical Hole Spacing

Non cumulative tolerances on hole to hole spacing.

	Metric (mm)	Decimal (in.)
A	2108.0 $\pm .000$	82.992 $\pm .000$
B	40.0 $\pm .25$	1.575 $\pm .010$
C	85.0 $\pm .20$	3.346 $\pm .008$
D	130.0 $\pm .20$	5.118 $\pm .008$
E	200.0 $\pm .20$	7.874 $\pm .008$
F	257.0 $\pm .20$	10.118 $\pm .008$
H	38.1 $\pm .025$	1.500 $\pm .010$
M	38.0 $\pm .020$	1.496 $\pm .008$
N	25.4 $\pm .020$	1.000 $\pm .008$
O	184.2 $\pm .020$	7.250 $\pm .008$
P	247.7 $\pm .020$	9.750 $\pm .008$
Q	260.1 $\pm .020$	10.250 $\pm .008$
R	209.5 $\pm .020$	8.246 $\pm .008$
S	263.5 $\pm .020$	10.375 $\pm .008$
T	387.4 $\pm .020$	15.250 $\pm .008$

OPTIONAL:
#12 Pan Head
Drill-kwik Screws

2.684"
[68.2mm] Ref.



End of hinge to first bearing, both ends.

HAGER COMPANIES
 HIGHWAY 78 WEST
 P.O. BOX 3368
 OXFORD, ALABAMA 36203

780-053 83" SD

DATE 10-25-96	REV. 01-15-02	DR. KBJ	SCALE None
FILENAME z:\roton\template\standard\780-053.dwg			
DRAWING NO.		780053083SD	